

**POLAR  
SELTZER**

PRESENTS



## **SPECIAL HOCKEY INTERNATIONAL ANNUAL TOURNAMENT**

### **Program Guide**

April 24th-26th 2025  
Lovell Arena  
Rockland Massachusetts

[SHIBOSTON2025.ORG](http://SHIBOSTON2025.ORG)





# SPECIAL HOCKEY INTERNATIONAL ANNUAL TOURNAMENT

April 24th – 26th  
Lovell Arena  
Rockland  
Massachusetts

SHIBOSTON2025.ORG

|  |    |
|--|----|
| Great Blizzards of MA Welcome Letter . . . . . | 3  |
| SHI Welcome Letter. . . . .                    | 4  |
| Governors Welcome Letter. . . . .              | 5  |
| Official Citation of MA. . . . .               | 6  |
| Town of Rockland Welcome Letter . . . . .      | 7  |
| In Memory Of . . . . .                         | 8  |
| SHI On Ice Sessions . . . . .                  | 12 |
| 2025 SHI Boston Rosters . . . . .              | 13 |
| SHI Boston Committees and Crews . . . . .      | 21 |
| Tournament Schedule Thursday . . . . .         | 22 |
| Tournament Schedule Friday . . . . .           | 23 |
| Tournament Schedule Saturday. . . . .          | 24 |
| The History of SHI . . . . .                   | 25 |
| FAQs . . . . .                                 | 33 |
| Tournament Rules . . . . .                     | 35 |

# THE GREAT BLIZZARDS OF MASSACHUSETTS SPECIAL HOCKEY INC

a 501©3 Public Charity



## Welcome to Boston, and for many, Welcome Back!

We are honored to be hosting the world's most important international special hockey tournament, again in Boston. And we are beyond excited to once again share our incredible city with you for the next week.

On behalf of the entire Great Blizzards of Massachusetts inclusive ice hockey team, THANK YOU for being part of two dozen teams participating in three days of competition, friendship, camaraderie and accomplishments. And thank you for supporting Special Hockey International and of your country's hockey governing body.

As a team which loves to travel, we know you have put out sizable resources – financial and manpower – into making this trip a reality for your team, especially coming from across America and down from Canada. We commend you – players, coaches, managers alike - for all your hard work practicing week in and week out. And kudos to the parents and guardians who transport most of your players to practices and games.

We intend to send you home with all sorts of visual memories – personalized tournament jerseys, tournament pucks, cool golf towels – but moreso the memories you will have forever of the experience of being part of an international hockey experience with fellow hockey players.

While you are in the Boston area, be sure to visit some of our wonderful and historic attractions: the Museum of Science, Faneuil Hall, Freedom Trail, Italian North End of Boston, Boston Common and Public Garden, and the Duck Tours on Boston Harbor, but you are not far from some of the world's coolest beaches in Cape Cod and along the South Shoreline and some of America's earliest history in Plymouth.

We certainly could not have done this without the support of many generous companies and organizations: Polar Seltzer, Doug Flutie Jr Foundation for Autism, Jersey Mikes, Riverview School, Monogram Food Solutions, Dave & Buster's, Advanced Natural Group, Rise North Capital, Green Rabbit, Recycle Works, Second Nature Brands, and the Plymouth County District Attorney's Office. Plus the staff at Lovell Arena and the many many volunteers who have given their time to prepare and execute a hopefully flawless tournament experience over the next three days

When we concluded last year's tournament, we left the international special hockey community wanting more international gatherings. We have tried to set the bar high for the past two years. When all is said and done, when the last game has been played here in Boston, we set our sights on SHI 2026 in Toronto March 5-7 and the opportunity to be with our hockey-loving friends again. See you all there. 😊

Steve Nearman  
SHI Boston 2025 Tournament Director  
On Behalf the SHI Boston 2025  
Organizing Committee  
And host The Great Blizz

**The Great Blizzards of Massachusetts Special Hockey**  
**Kingston/South Shore \* Cape Cod \* Winthrop/North Shore**  
**on Phone – 703-587-4321 or by email – [www.thegreatblizz.org](http://www.thegreatblizz.org)**  
**Proud member of USA Hockey**





Special Hockey International  
[Specialhockeyinternational@gmail.com](mailto:Specialhockeyinternational@gmail.com)  
(M) (416) 871-7601, (H) (416) 245-7601  
48 Mangrove Rd, Toronto, Ont M6L 2A3  
[www.specialhockeyinternational.org](http://www.specialhockeyinternational.org)

April 2025

Dear friends:

Welcome to the Polar Seltzer Special Hockey International 2025 Tournament, hosted by the Great Blizzards of Massachusetts Special Hockey.

We give special thanks to our hosts and their army of volunteers whose hard work make our tournaments so magical and special. We congratulate each and every player for their dedication and passion for the sport of ice hockey. We also thank club volunteers, coaches, sponsors, family members and others who support and work on behalf of our players to enable them to participate in this fantastic special event - the SHI Tournament!

Over the next few days, our players will meet old friends and make new ones while enjoying the finest traditions of special hockey. It's not about winning, it's about enjoying the sport of ice hockey and having fun while helping everyone on and off the ice to have fun too! In this way, we celebrate the diversity of our teams and players to promote a safe, truly inclusive special hockey experience for all. The SHI tournament is so much more special than any other tournament as it provides an opportunity to play and share in a passion that unites us within our respective countries as well as across borders.

Finally, we thank the founders of SHI, the late Pat Flick and Tony Sansone. We believe that their vision of a growing global family of special hockey teams has been fulfilled through the dedication of our volunteers around the world who have taken up the challenge over the past 31 years to establish special hockey in their local communities.

Through working in partnership with their respective National Governing Bodies such as Hockey Canada, USA Hockey, and their equivalents in the UK, Norway, Sweden, Denmark, and Finland, it has been possible for SHI teams to come together to participate in games at special hockey tournaments that are truly International.

In this respect, SHI is unique so we would like to take this opportunity to invite all Special Hockey teams to join or maintain membership of their respective National Governing Bodies so that they may participate in future SHI tournaments.

Mike Dwyer, President,  
Special Hockey International  
On behalf of SHI's Board of Directors



OFFICE OF THE GOVERNOR  
COMMONWEALTH OF MASSACHUSETTS

STATE HOUSE • BOSTON, MA 02133  
(617) 725-4000

MAURA T. HEALEY  
GOVERNOR

KIMBERLEY DRISCOLL  
LIEUTENANT GOVERNOR

April 2025

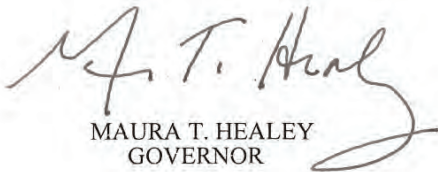
Dear Friends:

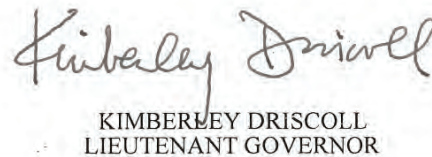
On behalf of the Commonwealth of Massachusetts, Lieutenant Governor Driscoll and I would like to welcome you to Polar Seltzer SHI Boston 2025, an annual tournament of Special Hockey International.

Hosted by The Great Blizzards of Massachusetts and organized by Special Hockey International, Polar Seltzer SHI Boston is a highly acclaimed three-day international tournament for players with developmental challenges, giving teams the chance to face off in four games each, plus a bonus "A" game. This tournament has attracted players hailing from Canada and the United States and emphasizes the importance of participation and fair play over rivalry. The tournament fosters a sense of community to many, promoting inclusiveness in ice hockey and lifelong friendships that transcend international borders. It is this attitude of kindness, inclusivity and love for the game of hockey that makes the Special Hockey International Tournament such a wonderful and impactful event.

Lieutenant Governor Driscoll and I are thrilled to be in support of Polar Seltzer SHI Boston 2025, and we extend our well wishes to all participants and fans for an exciting series.

Sincerely,

  
MAURA T. HEALEY  
GOVERNOR

  
KIMBERLEY DRISCOLL  
LIEUTENANT GOVERNOR

# Commonwealth of Massachusetts

## State Senate



### Official Citation

Be it Known, that the Massachusetts Senate  
Hereby extends its Congratulations to:

SPECIAL HOCKEY INTERNATIONAL

#### In Recognition of:

YOUR COMMITMENT TO PROVIDING AN  
INCLUSIVE ENVIRONMENT AND EXCEPTIONAL  
OPPORTUNITIES FOR OUR ATHLETES ; and

Be it further Known, that the Massachusetts Senate extends  
its best wishes for continued success; that this Citation be  
duly signed by the President of the Senate and attested to  
and a copy thereof transmitted by the Clerk of the Senate.



By: \_\_\_\_\_

*Karen E. Spilka*

President of the Senate

Karen E. Spilka

Attest: \_\_\_\_\_

*Michael D. Hurley*

Clerk of the Senate

Michael D. Hurley

Offered by: \_\_\_\_\_

*Dylan A. Fernandes*

State Senator

Dylan A. Fernandes

Date: \_\_\_\_\_

April 24, 2025





## TOWN OF ROCKLAND, MA

Town Hall  
242 Union Street  
Rockland, Massachusetts 02370

*Telephone:* (781) 871-1874  
*Fax:* (781) 871-0386

*Website:* [www.rockland-ma.gov](http://www.rockland-ma.gov)  
*Twitter:* @RocklandTown  
*Facebook:* TownofRockland

April 15, 2025

Dear SHI Boston 2025 Participants:

On behalf of the Town of Rockland, I am pleased to offer warm greetings to all those attending the Special Hockey International Boston 2025 Tournament.

This year's Tournament, held at the state-of-the-art Lovell Arena, brings together 21 teams from across the United States, Canada and the United Kingdom. Each team will play four games over three days with nearly 350 players, plus their families and coaches, participating.

Your hosts, The Great Blizzards of Massachusetts, is a successful six-year program, offering an inclusive, fun and accessible ice hockey experience for more than 60 teammates and their families. The Great Blizzards provides an opportunity for people with disabilities to shine on the ice, regardless of physical or cognitive needs, gender, race, ethnicity, or experience.

The Town of Rockland welcomes you all and encourages you to take advantage of all our historic town has to offer.

I hope you have an enjoyable event as I extend my best wishes for your time in Rockland.

Sincerely,

Douglas Lapp  
Town Administrator





In Memory Of



**Pat Flick**  
**1939-2023**

**Founder of Grandravine Special Hockey  
and Special Hockey International**

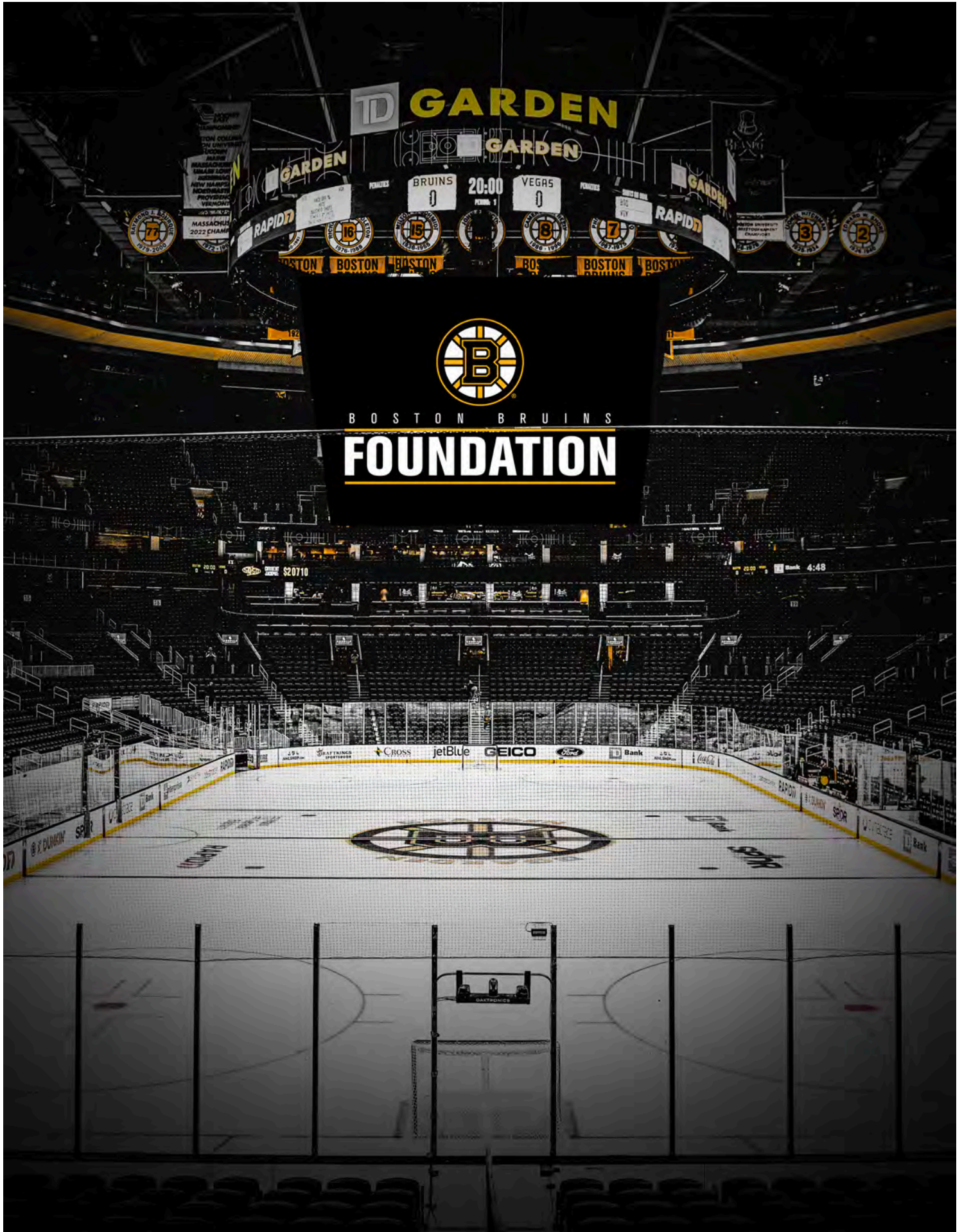
“If you do it for the right reason and you see what the kids do, there is no award I could ever receive that would take the place of the feeling I got after doing what I did.”



STANLEY CUP SPONSOR

# POLAR SELTZER

# STANLEY CUP SPONSOR





**Doug Flutie Jr.  
Foundation for Autism**

IN PARTNERSHIP WITH





# SHI ON ICE SESSIONS

## Friday April 25th



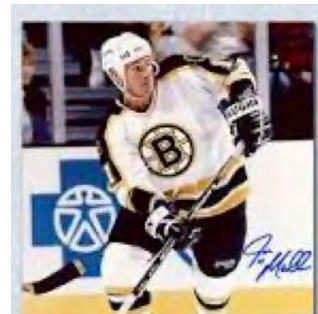
### Joe Mullen – Hard Work Pays Off!

Friday April 25th at 11:00am - 12:30pm

Join one of the hardest working NHL stars on-ice at 11 am on Friday April 25th as part of our Bruin Alumni Session. Joe played for Boston College and then St Louis Blues, Calgary Flames, Pittsburgh Penguins and the Boston Bruins from 1979 to 1997. Joe was known for his hard work effort that resulted in 502 goals (the first American born player to do so), Three Stanley Cups, and The Lady Bing Trophy (for most gentlemanly player).

Joe will join us and show some important drills and then answer any questions.

*Note: All players must have helmets, neck-guards, and skates in order to be on the ice.*



SPONSORED BY:



**Riverview  
School**

### Bob Sweeney – Hockey Is Fun!

Friday April 25th at 11:00am - 12:30pm

Join Bob Sweeney for a fun session on ice at the SHI Tournament. Bob played in the NHL from 1987 to 1996 with The Buffalo Sabres, Calgary Flames and the Boston Bruins. Currently he is the President of Boston Bruins Foundation that collaborates with charitable organizations throughout New England.

Bob will help demonstrate some fun drills and games with and then answer your questions

*Note: All players must have helmets, neck-guards, and skates in order to be on the ice.*



SPONSORED BY:



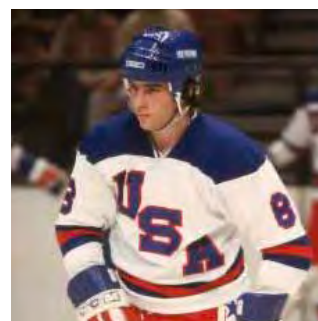
### Dave Silk – Believe In Miracles!

Friday April 25th at 11:00am - 12:30pm

Join Dave Silk for the Bruin Alumni Session on Friday April 25th. Dave's career was highlighted with the incredible gold medal victory in 1980 Olympics – “do you believe in miracles?” And, Dave played in the NHL from 1980 through 1991 with The New York Rangers, Boston Bruins, Detroit Red Wings and Winnipeg Jets.

We'll do some fun drills and games with Dave that show Dave's great hands and puck-handling ability.

*Note: All players must have helmets, neck-guards, and skates in order to be on the ice.*



SPONSORED BY:



# 2025 SHI BOSTON ROSTERS



## BALTIMORE SAINTS B TEAM BLUE

### PLAYERS

|                  |     |
|------------------|-----|
| Breslen Davis    | .98 |
| Lachlan Davis    | .65 |
| Austin Geller    | .61 |
| Terry Lang       | .38 |
| Michael Liberman | .27 |
| Antonio Martinez | .13 |
| Joshua Osten     | .45 |
| Adam Rouch       | .71 |
| Dan Schnell      | .95 |
| Jacob Smith      | .18 |
| Jimmy Yanchulis  | .3  |

### COACHES

Erika Coughlin  
Anne Douglas  
Joshua Douglas  
John Doyle  
Curtis Goodwin  
Bradford Saul



## BALTIMORE SAINTS C TEAM RED

### PLAYERS

|                    |     |
|--------------------|-----|
| Harrison Blockston | .68 |
| Caleb Chrismer     | .34 |
| Gabrielle Douglas  | .49 |
| Rufus Edelenbos    | .45 |
| Michael Oakley     | .80 |
| Alexandra Saul     | .31 |
| Cooper Wagoner     | .22 |
| Amara Coughlin     | .9  |
| Mark Eng           | .59 |
| Ellen Scheel       | .53 |
| Kieran Coughlin    | .94 |

### COACHES

Erika Coughlin  
Anne Douglas  
Joshua Douglas  
John Doyle  
Curtis Goodwin  
Bradford Saul



## BRICKSTARS

### PLAYERS

|                          |     |
|--------------------------|-----|
| Matthew Caccavano        | .15 |
| Paulie Crepaldi Jr.      | .23 |
| Christopher Farkas       | .14 |
| Michael Garguilo         | .42 |
| Bryan Huntley            | .20 |
| JT Lanzieri              | .56 |
| Joshua Lauver            | .17 |
| Michael Mayhew           | .41 |
| Johanna Schuele-Van Aken | .12 |
| Eli Silva                | .46 |
| Evan Silva               | .52 |
| Danny Sullivan           | .39 |
| Evan Yasser              | .27 |
| Maryanna Vanderhoop      | .8  |
| Alex Yoo                 | .34 |

### COACHES

Michael Mayhew  
Dina Crepaldi

# 2025 SHI BOSTON ROSTERS



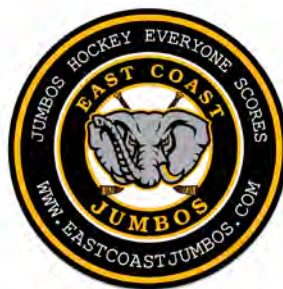
## CHICAGO STORM SPECIAL HOCKEY

### PLAYERS

|                               |     |
|-------------------------------|-----|
| Karl Urycki . . . . .         | .2  |
| John Pellegrini . . . . .     | .35 |
| Ryan Slattery . . . . .       | .11 |
| Michael Palmquist . . . . .   | .46 |
| Thomas Hall . . . . .         | .53 |
| Nickolai Krumrey . . . . .    | .60 |
| Callum Anderson . . . . .     | .18 |
| Taggard Blomquist . . . . .   | .55 |
| John Damme Jr . . . . .       | .64 |
| Zachary Pierce . . . . .      | .43 |
| Eric Hum . . . . .            | .4  |
| Alexander Drews . . . . .     | .25 |
| Christopher Donisch . . . . . | .2  |
| Zachary Millard . . . . .     | .40 |
| Timothy Glennon . . . . .     | .95 |

### COACHES

Jason Blomquist  
Jason Donisch  
Steven Drews  
Ben Hum  
Michelle Millard  
Wayne Millard  
Michael Riley  
James Pellegrini  
Chelsea Donisch  
Michael Krumrey  
David Pierce



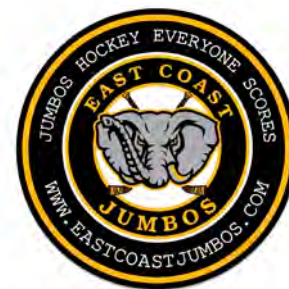
## EAST COAST JUMBOS B+

### PLAYERS

|                            |     |
|----------------------------|-----|
| Donald Brandt . . . . .    | .66 |
| William Carroll . . . . .  | .14 |
| Gavin Jolly . . . . .      | .15 |
| Patrick Mahoney . . . . .  | .75 |
| Louis Marino . . . . .     | .18 |
| Jenna Markow . . . . .     | .23 |
| Jason Mazzola . . . . .    | .21 |
| Brendan McElroy . . . . .  | .22 |
| John McElroy . . . . .     | .87 |
| Benjamin Ragazzo . . . . . | .98 |
| Jack Swenson . . . . .     | .39 |
| Thomas Tamasanis . . . . . | .99 |

### COACHES

Ray Leblanc  
Paul Scarnici  
Scott Swenson  
Kevin Wilkie



## EAST COAST JUMBOS B-

### PLAYERS

|                             |     |
|-----------------------------|-----|
| Jake Barbas . . . . .       | .40 |
| Patrick Bradbury . . . . .  | .6  |
| Joseph Cabral . . . . .     | .7  |
| Luke Cesario . . . . .      | .63 |
| Joey Coen . . . . .         | .59 |
| Brendan Griffin . . . . .   | .33 |
| Luke Knup . . . . .         | .60 |
| Sean Lawrence . . . . .     | .27 |
| Shane Leblanc . . . . .     | .3  |
| Cameron Lopez . . . . .     | .1  |
| Brody McGuirk . . . . .     | .73 |
| Audrey Muehleisen . . . . . | .93 |
| Ella Muehleisen . . . . .   | .55 |
| Milo Necochea . . . . .     | .44 |
| Braden O'Connell . . . . .  | .30 |
| Giovan Pascal . . . . .     | .48 |
| David Rosenzweig . . . . .  | .35 |
| Richy Schwalm . . . . .     | .19 |
| Timothy Stevenson . . . . . | .16 |

### COACHES

Ray Leblanc  
Cristian Necochea  
Paul Scarnici  
Scott Swenson  
Kevin Wilkie



# 2025 SHI BOSTON ROSTERS



## GRANDRAVINE TORNADOES TEAM 1

### PLAYERS

|                               |    |
|-------------------------------|----|
| Michael Carcasole . . . . .   | 16 |
| Justin Cohen. . . . .         | 55 |
| Luke Delzotto Hammond . . .   | 31 |
| Nicholas Guzman . . . . .     | 40 |
| Mohamed Hamza . . . . .       | 12 |
| Zafar Khan. . . . .           | 15 |
| Mark Liotta. . . . .          | 73 |
| Ben Lohr. . . . .             | 53 |
| Todd Nagle . . . . .          | 18 |
| Carmine Palumbo . . . . .     | 87 |
| Ryan Reid . . . . .           | 42 |
| Viktoria Robeznieks . . . . . | 11 |
| Sabrina Scalia . . . . .      | 64 |
| Andrew Zhukov . . . . .       | 47 |

### COACHES

Michael Cohen  
Colin Reid  
Anthony Scalia



## GRANDRAVINE TORNADOES TEAM 2

### PLAYERS

|                            |    |
|----------------------------|----|
| Niki Eren. . . . .         | 33 |
| Joseph Egizii . . . . .    | 85 |
| Andrew Garcia. . . . .     | 63 |
| Joshua Garcia . . . . .    | 44 |
| Claire Garcia. . . . .     | 78 |
| Christian Gioia. . . . .   | 91 |
| Biagino Iamascia . . . . . | 45 |
| Andrew Leah . . . . .      | 66 |
| Steven Magni . . . . .     | 89 |
| Steven Merrick. . . . .    | 60 |
| Justin Neville . . . . .   | 97 |
| Mark Rizzuto. . . . .      | 19 |
| Landon Stewart . . . . .   | 95 |
| Jonathan Tedesco . . . . . | 13 |
| Julian Trozzo . . . . .    | 61 |

### COACHES

David Leah  
Patrick Neville  
Joseph Trozzo  
Valentino Vescio



## GRANDRAVINE TORNADOES TEAM 3

### PLAYERS

|                               |    |
|-------------------------------|----|
| Eric Allard . . . . .         | 92 |
| Angus Chan . . . . .          | 96 |
| Benjamin Chung. . . . .       | 25 |
| Mio Espina. . . . .           | 65 |
| Ryan Inwood. . . . .          | 9  |
| Aaron Kwok . . . . .          | 43 |
| Keith Alexander Livingstone . | 59 |
| Thomas Marin . . . . .        | 52 |
| Jonathan Parisien . . . . .   | 29 |
| Nick Pitoscia. . . . .        | 82 |
| Jonathan Quintan . . . . .    | 94 |
| Eric James Seguin. . . . .    | 17 |
| Alex Tse . . . . .            | 76 |
| Donald Yip. . . . .           | 39 |
| Timothy Stevenson . . . . .   | 16 |

### COACHES

Deiro Marin  
Joseph Rizzuto  
Valentino Vescio

# 2025 SHI BOSTON ROSTERS



## THE GREAT BLIZZ B TEAM

### PLAYERS

|                   |    |
|-------------------|----|
| Ethan Anderson    | 37 |
| Jack Bailey       | 11 |
| Declan Bohan      | 20 |
| Brendan Carey     | 99 |
| Fiona Cheever     | 55 |
| Joey Del Guidice  | 7  |
| Tomas Deware      | 33 |
| Daniel Gardner    | 27 |
| Drew Goydas       | 88 |
| Adam Klimovsky    | 77 |
| Kurtis MacDonald  | 3  |
| Ian MacInnis      | 10 |
| Thomas Marble III | 25 |
| Noel Medina       | 21 |
| Sam Midouin       | 23 |
| Lincoln Mosca     | 15 |
| Jonathan Nearman  | 22 |



## THE GREAT BLIZZ C TEAM #1

### PLAYERS

|                   |    |
|-------------------|----|
| Ben Andrews       | 80 |
| Will Barrett      | 81 |
| Katelyn Cuzner    | 63 |
| Matt Fleming      | 75 |
| Luke Harris       | 29 |
| Charlie Humber    | 19 |
| Teddy Hunt        | 4  |
| Shane Kelly-Twigg | 14 |
| Owen Lansing      | 35 |
| Colin Ledoux      | 64 |
| Arthur Milagre    | 17 |
| Lilly Millowitz   | 28 |
| Kayley Perlman    | 70 |
| Sophia Plettner   | 44 |
| Alex Remle        | 34 |
| Eli Shapiro       | 1  |



## THE GREAT BLIZZ C TEAM #2

### PLAYERS

|                     |           |
|---------------------|-----------|
| John Almeder        | 3         |
| Echo Avery          | 2         |
| Ryan Bettcher       | 18        |
| Tanner Burns        | 8         |
| Riley Devincent     | 9         |
| Annie Flanagan      | 24        |
| Andrew Gorton       | 87        |
| Charlie Grant       | 28        |
| Shane Hathaway      | 42        |
| Elijah Livelsberger | 17        |
| Laura Mahoney       | 31        |
| James Moseley       | 60        |
| Oliver Perniola     | 88        |
| Chris Spencer       | 25        |
| James Towle         | 2         |
| Ian MacInnis        | 10 GOALIE |
| Jonathan Nearman    | 22 GOALIE |

### GREAT BLIZZ COACHES/STAFF

John Robertson  
Sean Mahoney  
Tom Mahoney  
Jeff Hemphill  
Patty MacDonald  
Shea McDonagh  
Pete Hall  
Steve Nearman  
Jack McIntosh  
Joe Coletti  
Ken Silva

# 2025 SHI BOSTON ROSTERS



## GLADIATORS Hockey Club

### HADC GLADIATORS

#### PLAYERS

|                      |    |
|----------------------|----|
| Meaghan Bridges      | 48 |
| Matthew Germain      | 61 |
| Andrej Kink          | 5  |
| Daniel Mazzei        | 41 |
| Kevin Mueller        | 27 |
| Sonia Petrocco       | 39 |
| Robert Ciampa        | 34 |
| Michael Congiusti    | 15 |
| Frankie Crudo        | 17 |
| Christian D'Ulisse   | 67 |
| Stephen D'Alessandro | 13 |
| Kevin Deakin         | 18 |
| Frankie Dejak        | 22 |
| Marco Greco          | 3  |
| Jason Lansing        | 30 |
| Rishi Parikh         | 91 |
| Johnny Perricone     | 93 |

#### COACHES

Scott Bridges  
Fernando Carinci  
Louis Lansing  
Daniel Loader  
Josie MacDonald  
Tony Mazzei  
Maria Milanetti



### MAINE HIGHLANDERS B TEAM

#### PLAYERS

|                 |    |
|-----------------|----|
| Gavin Blanchard |    |
| Hunter Coombs   | 28 |
| Callum Donegan  | 23 |
| Grant Donegan   | 13 |
| Sean Hallee     | 63 |
| Jaxson Hayes    |    |
| Griffin Higgins |    |
| Kristian Joliat | 19 |
| Peter Mahoney   |    |
| Noah Moriarity  | 7  |
| Lucas Parsons   | 12 |
| Abigail Stevens | 14 |
| Brandon Wear    | 29 |

#### COACHES

Michael Hallee  
Sarah Joliat  
Riley Kenney  
Patricia Hallee  
Jesse Moriarity



### MAINE HIGHLANDERS C TEAM

#### PLAYERS

|                  |    |
|------------------|----|
| Bentley Black    | 44 |
| Cole Brazz       |    |
| Jeremiah Donegan | 99 |
| Devonte Donegan  | 5  |
| Nyssaiah Dunn    | 20 |
| Donte Eldred     | 10 |
| Van Elofson      |    |
| Noah Gagne       | 87 |
| Sam Gagne        | 15 |
| Samuel Harmon    |    |
| Derek Levesque   | 98 |
| Mike McIntire    | 33 |
| Noah Moriarity   | 7  |
| Cash Terstegen   | 11 |
| Brandon Wear     | 29 |

#### COACHES

Michael Hallee  
Sarah Joliat  
Riley Kenney  
Bethany Terstegen  
Patricia Hallee  
Jesse Moriarity



# 2025 SHI BOSTON ROSTERS



## MINNESOTA WILD RED TEAM

### PLAYERS

|                           |    |
|---------------------------|----|
| Adam Rich . . . . .       | 29 |
| Allison Holden . . . . .  | 22 |
| Brooke Brezinka . . . . . | 89 |
| Connor Nordvall . . . . . | 28 |
| Hope Thomas . . . . .     | 7  |
| Neila Rugar . . . . .     | 12 |
| Ruby Wheeler . . . . .    | 3  |
| Ryan Frick . . . . .      | 97 |
| Shaun Siwek . . . . .     | 42 |
| Alexa Frick . . . . .     | 9  |
| Taylor Tokheim . . . . .  | 8  |

### COACHES

Chris Brezinka  
Teagan Brezinka  
Tate Rugar  
Andrea Thomas  
Colin Thomas  
Angela Wheeler  
Greg Williamson  
Jane Cashin



## MINNESOTA WILD GREEN TEAM

### PLAYERS

|                              |    |
|------------------------------|----|
| Elizabeth Peterson . . . . . | 24 |
| Brett Williamson . . . . .   | 89 |
| Camille Nelson . . . . .     | 26 |
| Hailey Gilbertson . . . . .  | 20 |
| Jack Carter . . . . .        | 7  |
| Jeffrey Parnell . . . . .    | 27 |
| John Lindeberg . . . . .     | 7  |
| Jordan Perttunen . . . . .   | 86 |
| Nathan Jockisch . . . . .    | 18 |
| Ron Hermansen . . . . .      | 10 |
| Samuel Cashin . . . . .      | 51 |
| Tonia Frick . . . . .        | 88 |

### COACHES

Mark Lindeberg  
Colin Thomas  
Greg Williamson  
Catherine Zierden-Carter



## MISSISSAUGA CRUSADERS

### PLAYERS

|                                  |    |
|----------------------------------|----|
| Thomas Adams . . . . .           | 34 |
| Donhyea Gentles-Wilson . . . . . | 18 |
| Ryan Bazinet . . . . .           | 77 |
| Zackary Carter . . . . .         | 11 |
| Justin Crooks . . . . .          | 2  |
| Rodney Hong . . . . .            | 47 |
| Michael James . . . . .          | 68 |
| Mark Iwasiw . . . . .            | 27 |
| Michael Marshall . . . . .       | 25 |
| Nicholas Romano . . . . .        | 16 |
| Jonathan Speranza . . . . .      | 81 |
| Bradley Bowen . . . . .          | 29 |
| Kevin Tanser . . . . .           | 1  |
| Vincent Bassman . . . . .        | 24 |
| Joseph Tullo . . . . .           | 20 |
| Ryan Zanette . . . . .           | 88 |
| Dylan Woodyatt . . . . .         | 31 |

### COACHES

Renaud Adams  
Douglas Carter  
Doug W. Gillespie  
Thomas Iwasiw  
Andrew James  
Bruce James  
John Patton  
Dylan Woodyatt

# 2025 SHI BOSTON ROSTERS



## OTTAWA SPECIAL HOCKEY STARS BLUE TEAM

### PLAYERS

|                            |    |
|----------------------------|----|
| Derek Beevor . . . . .     | 41 |
| Dwayne Shail . . . . .     | 91 |
| Michael Ashenden . . . . . | 99 |
| Ryan Gaudette . . . . .    | 33 |
| Philippe Aubry . . . . .   | 88 |
| Nicholas Segreto . . . . . | 17 |
| Reese Tessier . . . . .    | 29 |
| Eric Breen . . . . .       | 28 |



## OTTAWA SPECIAL HOCKEY STARS RED TEAM

### PLAYERS

|                                  |    |
|----------------------------------|----|
| Patrick Richard . . . . .        | 1  |
| Percy Bradley . . . . .          | 87 |
| Julien Bailliu-Chaloux . . . . . | 12 |
| Gavin Tsang . . . . .            | 24 |
| Alexandre Vautour . . . . .      | 50 |
| Samuel Gilbert . . . . .         | 18 |
| Dante D'Adesky . . . . .         | 10 |
| Sebastien Lamarre . . . . .      | 21 |
| Nathaniel Marlot . . . . .       | 71 |

### COACHES

Leslie Anne Bailliu  
 MacKenzie Carr  
 Jeff Kelly  
 Kelsey Kelly  
 Stephane Lamarre  
 Alexander Langdon  
 Paul Leduc  
 Sean Leduc  
 Hannah Marcellus  
 Daniel Marlot  
 Francois Oulette  
 Erik RossKen Tsang  
 Michel Vautour  
 Bob Watson  
 Sang Yoon



## RHODE ISLAND JR BEARS

### PLAYERS

|                             |    |
|-----------------------------|----|
| Shane Bassett . . . . .     | 22 |
| Domenic Calligano . . . . . | 24 |
| Connor Correia . . . . .    | 26 |
| Martin Conroy . . . . .     | 11 |
| Brandon Dicecco . . . . .   | 18 |
| Ayden Enos . . . . .        | 16 |
| Leo Foley . . . . .         | 20 |
| Collin Jacobson . . . . .   | 27 |
| Justin Kell . . . . .       | 14 |
| Austin Lamoureux . . . . .  | 10 |
| Dylan Lausier . . . . .     | 25 |
| Ethan Liu . . . . .         | 28 |
| Matthew Lobao . . . . .     | 21 |
| Myles Murphy . . . . .      | 23 |
| Brayden Stowell . . . . .   | 2  |
| Oliver Tyce . . . . .       | 8  |

### COACHES

Gerry Letourneau

# 2025 SHI BOSTON ROSTERS



## WISCONSIN TIMBER WOLVES

### PLAYERS

|                             |    |
|-----------------------------|----|
| Cooper Anthon. . . . .      | 29 |
| Alex Busse-Camblor. . . . . | 21 |
| Kenneth Cosgrove. . . . .   | 6  |
| John Espil . . . . .        | 22 |
| Dylan Fecht . . . . .       | 52 |
| Jacob Lange. . . . .        | 25 |
| Zach McDonald . . . . .     | 23 |
| Mokya Mateni . . . . .      | 47 |
| Joe Riefke . . . . .        | 13 |
| Nicole Smazal . . . . .     | 24 |
| Charles Venne. . . . .      | 11 |
| William Whalen . . . . .    | 12 |
| Mason Young . . . . .       | 22 |
| Haldan Prager. . . . .      | 13 |
| Preston Hall . . . . .      | 81 |
| Keegan Hunt. . . . .        | 36 |

### COACHES

Harold Bennett  
Brian Lange  
Tim McDonald  
Brian Riefke  
Bethany Whalen



# SHI BOSTON COMMITTEES AND CREWS



## 2025 EVENT HOST COMMITTEE

Donna Hemphill -  
*Volunteer Coordinator*  
Dwarde Geishecker  
Missy Moseley  
Elaine Towle  
Colin MacInnis  
Diane O'Brien  
Gail Butler  
Joan Patterson

Erik Trojan  
Geline Midouin  
Patty MacDonald  
Dave Watt  
Holly Flanagan  
Jen Magee  
Pete Hall  
Bill Wedge  
Colleen Marble

## REFEREES

John Burns  
Jeff Hemphill  
Rachel Hutchinson  
Kristy Kennedy  
Bryan Harrington  
Jeremiah Lynch

George Heilig  
Eva Erickson  
Jay Glidden  
Chip Fagen  
Keenan Peterson

## SPECIAL THANKS TO SHI BOARD

Rob Bentley  
*Vice President*

Mike Dwyer  
*President*

Joe Rizzuto  
*Canadian Rep*

## LODGING CONSULTANT

Mark Buonagurio, ConferenceDirect®

## MARKETING AND PROMOTIONS

Quinnovative Marketing

## TOURNAMENT WEBSITE & PROGRAM GUIDE

Shields SGF

## ROCKLAND POLICE HONOR GUARD

Led by Lt. Thomas MacDonald

# OFFICIAL TOURNAMENT SCHEDULE

## THURSDAY APRIL 24TH

| TIME            | RINK L1   | RINK L2                       | RINK L3                    |
|-----------------|---|-------------------------------|----------------------------|
| 10:00am-11:00am |   | OPENING CEREMONIES            |                            |
| 11:00am-12:00pm | GRAND B1+<br>OTTAWA B+  | GRAND B3-<br>MAINE B-         | BLIZZ1 C<br>HADC GLAD C    |
| 12:00pm-1:00pm  | GRAND B2-<br>BLIZZ B-   | MISSISSAUGA B<br>EC JUMBOS B- | BALTIMORE C<br>RHODE ISL C |
| 1:00pm-2:00pm   | MAINE C<br>BLIZZ 2C   | GRAND B1+<br>EC JUMBOS B+     | HADC GLAD C<br>CHICAGO C   |
| 2:00pm-3:00pm   | BALTIMORE B+<br>WISCONSIN B+                                      | GRAND B3-<br>EC JUMBOS B-     | OTTAWA B+<br>MINN B+       |
| 3:00pm-4:00pm   | GRAND B2-<br>MINN B-  | 'ALL COACHES'<br>GAME         |                            |
| 4:00pm-5:00pm   |   |                               |                            |
| 5:00pm-8:00pm   | TOURNAMENT BANQUET DAVE & BUSTERS<br>SOUTH SHORE PLAZA, BRAINTREE |                               |                            |

GAMES AND TIMES SUBJECT TO CHANGE



# OFFICIAL TOURNAMENT SCHEDULE

## FRIDAY APRIL 25TH

| TIME            | RINK L1                  | RINK L2  | RINK L3  |
|-----------------|--------------------------|--|--|
| 10:00am-11:00am | BALTIMORE C<br>BLIZZ1 C  | BLIZZ B<br>MISSISSAUGA B   |  |
| 11:00am-12:00pm | CHICAGO C<br>MAINE C     | RHODE ISL C<br>BLIZZ2 C  | SHI ON ICE BRUINS<br>ALUMNI SESSIONS<br>11-12:30 |
| 12:00pm-1:00pm  | MINN B+<br>BRICKSTARS B+ | BALTIMORE B+<br>EC JUMBOS B+<br><b>BRUINS MASCOT<br/>BLADES WILL HERE!</b> |  |
| 1:00pm-2:00pm   | MISSISSAUGA B<br>MINN B- | BLIZZ B<br>MAINE B-<br><b>BRUINS MASCOT<br/>BLADES WILL HERE!</b>          |  |
| 2:00pm-3:00pm   | CHICAGO C<br>RHODE ISL C | MAINE C<br>BLIZZ1 C  |  |
| 3:00pm-4:00pm   | BALTIMORE B+<br>MINN B+  | BRICKSTARS B+<br>EC JUMBOS B+  |  |
| 4:00pm-5:00pm   | MINN B-<br>EC JUMBOS B-  | OTTAWA B+<br>WISCONSIN B+  |  |

GAMES AND TIMES SUBJECT TO CHANGE



# OFFICIAL TOURNAMENT SCHEDULE

## SATURDAY APRIL 26TH

| TIME            | RINK L1                   | RINK L2                                    | RINK L3                     |
|-----------------|---------------------------|--|-----------------------------|
| 10:00am-11:00am | GRAND B1+<br>WISCONSIN B+ | BRICKSTARS B+<br>OTTAWA B+                 | MAINE C<br>BLIZZ1 C         |
| 11:00am-12:00pm | GRAND B2-<br>MAINE B      | HADC C<br>BALTIMORE C                      | CHICAGO C<br>BLIZZ2 C       |
| 12:00pm-1:00pm  | GRAND B3-<br>MINN B-      | BRICKSTARS B+<br>BALTIMORE B+              | EC JUMBOS B+<br>WISCONSIN B |
| 1:00pm-2:00pm   | GRAND B1+<br>MINN B+      | BLIZZ2 C<br>BALTIMORE C                    | MISSISSAUGA B<br>MAINE B-   |
| 2:00pm-3:00pm   | GRAND B2-<br>EC JUMBOS B- | HADC C<br>RHODE ISL C                      | GRAND B3-<br>BLIZZ B        |
| 3:00pm-4:00pm   |                           | <b>SPECIAL "A" PLAYER<br/>INVITATIONAL</b> |                             |

GAMES AND TIMES SUBJECT TO CHANGE



# The History of Special Hockey International and its Annual Tournament



## 1970

Pat Flick, who had been involved with minor league hockey since 1970 and who had been affiliated with the Grandravine Athletic Association in Toronto, notices a couple of young boys who always came out to the rink but only to watch their brothers play ice hockey. Flick discovers that these young boys were developmentally challenged. He has this dream - why not ice hockey for the developmentally challenged? So with the help of the Grandravine Athletic Association, he arranges some ice time, and the Grandravine Tornados are born.

## 1992

Fast forward to 1992, while waiting for his flight at Toronto International Airport, Tony Sansone of St. Louis Blues fame reads an article about Flick's team. He also dreams of starting a similar program in St. Louis. For two years, he struggles to find the ice time necessary.

## 1994

Finally, in January 1994, with the help of Kelly Chase of the St. Louis Blues, Tony launches the Gateway Locomotives. On Thanksgiving weekend, he invites Pat Flick and the Grandravine Tornados to St. Louis for a two-team tournament.

## 1995

In 1995, St. Louis again hosts their Thanksgiving tournament with two new clubs joining Grandravine and the host Gateway Locomotives. They are the Durham Dragons and the Ottawa Valley Ambassadors.

## 1996

In 1996 representatives from special hockey teams in St. Louis, Denver, New York, Toronto, and Ottawa met in St. Louis to form a league for teams to compete in international play. Special Hockey International is officially launched, with Pat Flick as commissioner and Tony Sansone as President. They establish an annual tournament to be hosted by different teams each year. St. Louis hosted the first annual SHI tournament and then alternated between U.S. and Canadian cities.

## 2002

In 2002, Mike Dwyer makes SHI truly international by starting a team in London. The Werewolves of London are a part of the Streatham Youth Hockey Club in London, England. Dwyer eventually becomes the president of SHI and still is, with Grandravine Director Joe Rizzuto as a Board member. Rizzuto too, is still a Board member of SHI.

**Today, SHI has teams throughout North America and Europe, and the SHI Annual tournament attracts over 70 teams to its three-day festival.**

## 2020

In 2020, COVID shut down the tournament

## 2023

But in winter 2023, with The Great Blizz Founder and Executive Director Steve Nearman dreaming of taking his team to the international level, he contacts SHI for an in-person meeting. Nearman, along with his wife Melanie and their 14-year-old lopped-eared bun Harpo, drive nine hours to Toronto and pitches his team to bring back the SHI annual tournament for 2024, the first time in five years.

With Rizzuto in person and two other SHI Board members, including Dwyer, on a ZOOM connection, the Board of SHI awards The Great Blizz with the SHI Boston 2024 special ice hockey tournament. The date is set for April 25-27 at Lovell ice arena south of Boston and north of Cape Cod.

## 2024

SHI hit its full stride again after the COVID shutdown of 2020 with The Great Blizzards of Massachusetts Special Hockey Inc hosting 33 teams from the United Kingdom, Canada and the United States over three days at the fabulous new Lovell Arena in Rockland, a suburb of Boston. Special guest Tony Sansone was on hand at Opening Ceremonies to take the ceremonial first puck drop with SHI officials Joe Rizzuto, Mike Dwyer and Rob Bentley. Boston Bruins mascot Blades made an exciting appearance as did former Boston Bruins stars Joe Mullen and Bob Sweeney conducting a clinic for the players.

## 2025







# Riverview School

**A leader in educating extraordinary students.**

Riverview School is an independent, coeducational boarding/day school, located on Cape Cod, Massachusetts. Riverview is a leader in educating students with complex language and learning challenges. We're committed to helping each of our students gain academic, social, and independent living skills to achieve their goals. To learn more, visit [riverviewschool.org](http://riverviewschool.org).

## MIDDLE SCHOOL AT RIVERVIEW

Our main goal with all of our students is to change the trajectory of their lives. While we celebrate each student's individual talents and abilities, our youngest students who begin their Riverview journey in middle school have the greatest lead time to achieve the highest success in independence academically, emotionally and socially.



## HIGH SCHOOL AT RIVERVIEW

Our high school students have the best of both worlds—traditional high school experiences like sports, plays and concerts, prom, and graduation in a specialized learning environment tailored for them to thrive. Students begin to explore vocational opportunities, and work with our team to find the right path for them after high school.



## GETTING READY FOR THE OUTSIDE WORLD

Our successful post-high school program, G.R.O.W. (Getting Ready for the Outside World), is designed to give our students real-life vocational skills and experiences while reinforcing daily living skills and fostering their independence. Each student is given a personalized approach based on their interests to reach their goals.



Riverview remains committed to creating a longitudinal model of education, support, and connection from adolescence to adulthood. To that end, our newest program **Friends Forever** will provide additional support after graduation, acting as a social hub consisting of activities, educational resources, and employment opportunities for Riverview alumni.

OLYMPIC GOLD SPONSOR



**ADVANCED**

NATURAL GROUP

OLYMPIC GOLD SPONSOR

**DAVE &  
BUSTER'S®**



# SECURE YOUR WEALTH. ELEVATE YOUR FUTURE.

Beyond the familiar financial industry language, Rise North Capital delivers clarity in a world of noise. We don't serve "everyone" – we serve you, exactly where you are. Budgeting through chaos. Purchasing not just a house, but your sanctuary. Building legacy through family. Navigating career pivots. Crafting your freedom years.

Our professionals aren't generic advisors – they're financial architects who construct possibility from your unique foundation. We don't follow templated roadmaps; we forge custom pathways aligned precisely with your vision.

The difference? We reject the industry's cookie-cutter approach. Your financial journey isn't a series of transactions – it's the backbone of your life story. At Rise North Capital, we're not just another name on your statements. We're the catalyst transforming your relationship with money into something powerful, intentional, and unmistakably yours.



**JACOB GRAFF, ChFC**

©Managing Director  
FINANCIAL ADVISOR  
CA Lic. # 4307541  
C: 774-494-9120  
O: 781-519-6969

E: [jgraff@risenorthcapital.com](mailto:jgraff@risenorthcapital.com)

**CULLEN HUNT**

Financial Representative  
339-832-1896  
[chunt@risenorthcapital.com](mailto:chunt@risenorthcapital.com)

**[risenorthcapital.com](http://risenorthcapital.com)**

25 BRAINTREE HILL OFFICE PARK SUITE 403 BRAINTREE, MA 02184



Recycleworks is a leading provider of zero-waste solutions for food and beverage companies throughout New England. We have over 35 years of experience in the Recycling Industry. Headquartered in Braintree, MA, we utilize a fleet of trucks to service our customers.

Our focus is to divert all packaged and unpackaged food and beverage waste from going into the landfill. Our services extend to grocery stores, food and beverage manufacturers, distributors and production facilities in PA, MI, WI, NY, RI, CT, NH, VT, ME & MA.

Provide zero-waste solutions for all stages of the food and beverage industry.

We allow our customers to focus on what they do best – we handle the recycling so that they can focus on their customers.

Reducing landfill waste is our responsibility and opportunity ... it's what we do every day.





## PLAYER OF THE GAME SPONSOR



>>>>

.....

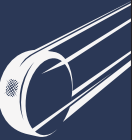
PROUD TO SUPPORT THE GREAT  
BLIZZARDS OF MASSACHUSETTS  
HOCKEY TEAM

>>>>

MY BEST WISHES TO ALL THE PLAYERS  
COMPETING IN THE

**SPECIAL HOCKEY INTERNATIONAL  
BOSTON 2025 TOURNAMENT**

District Attorney Tim Cruz



.....



Serving the Electrical Construction Industry since 1981

108 Myrtle Street, Quincy, MA 02171  
(617) 261-2400  
www.lynnwell.com



Best wishes to all our  
players and their families,  
coaches, and fans  
for a memorable  
2025 tournament!

Find us on the South Shore (Kingston),  
Cape Cod (East Dennis), and the  
North Shore (Winthrop).



# SHI Boston 2025 FAQs



## When is POLAR SELTZER SHI Boston 2025?

April 24-26, 2025

## Where is POLAR SELTZER SHI Boston 2025?

Lovell Arena, 120 Bill Delahunt Pkwy, Rockland, MA 02370.  
781-610-4400

## What time are the games?

Basically from 10am to 5pm all three days.  
CHECKIN begins at 10am Thursday.

## What time is Opening Ceremonies?

Teams can enter the Arena at 8am on Thursday April 24. Teams should line up by their team sign in the hallway in front of the rinks by 9:30am. Opening ceremonies will begin promptly at 10am. Each team will file onto Rink 2 (center rink) alphabetically by team name. The rink will be scuffed up so skates are not necessary – street shoes are fine.

## What about Closing Ceremonies?

Haven't read anything about that. Well, with teams leaving throughout the day on Saturday either to get home or to do the tourist thing, we felt it best not to have a formal Closing Ceremonies. However, when your team plays its last game, we will gather up the team and tournament officials and present our VERY COOL medals to the players plus a trophy for the team to take home with pride.

## Is there abundant free parking at the rink?

Yes. Please park between the lines – red line, blue line, goal line.

## How is the Arena laid out?

This fairly-new facility is incredible. You may not ever want to leave. The first level has the check-in room to the left side. If you just walk straight ahead, you will come out to the sheets of ice. Rink 1 is to the left, Rink 2 is front and center and Rink 3 is to the right. Locker rooms are across the hall from each sheet of ice, four locker rooms for each sheet.

If you head upstairs when you enter the Arena, you will find a full-service circular bar selling only Sam Adams – kiddin – a 4-lane

bowling alley, interactive golf, a gaming room, a full-service café and a well-stocked concessions stand. Also from upstairs you can watch the action on all three sheets of ice, from inside seating where it is warm to seating above the ice on a small balcony where it is ice temperature.

## Will there be a photographer taking photos for our friends at home to see?

Yes, The Great Blizz team photographer Bill Wedge will be taking photos to be posted on The Great Blizz Facebook site. He will post Opening Ceremonies pics mid-day Thursday and will post photos from each day's action that evening. Be sure to thank him when you see him in the Arena! He will be the guy with the camera...

## Will the games be livestreamed?

No. And if you see a posting on Facebook saying that they are, it's a scam and just delete it. As well, we don't sell gear on FB so ignore any scammers posting as such.

## Will there be a company selling sweatshirts and tee-shirts with the tournament logo?

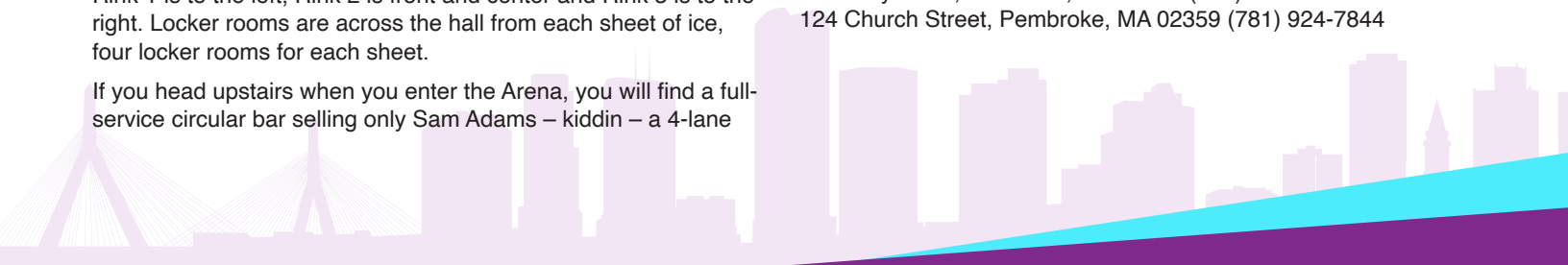
The Great Blizz will be selling a limited number of Blizz-branded warm sweats, hats and scarves.

## What options do we have for food?

The rink has a Café open most of the duration of the tournament, including morning coffee/tea and breakfast. The Café has an extensive lunch menu as well. The concession stand has a variety of candies we've never even heard of, plus all sorts of other snacks like chips and the like. The rink also has hydration stations to fill and re-fill your water bottles.

Speaking of food, what if we are driving around looking for a great sub shop which supports POLAR SELTZER SHI Boston 2025 and the autism community? That's easy, Jersey Mike's for sure. Through their partnership with the Tournament sponsor Doug Flutie Jr Foundation for Autism, Jersey Mike's is one of our sponsors. Frankly, there is no sub-stitute! Get it! You can find them at:

53 Commerce Way Suite 5, Plymouth, MA 02360 (508) 503-6093  
12 Tobey Road, Wareham, MA 02571 (774) 326-5326  
124 Church Street, Pembroke, MA 02359 (781) 924-7844



## What if I forgot to bring a piece of equipment or my stick broke?

The Arena's pro shop will be open from 8am to 8pm Thursday, Friday and Saturday. The pro shop will be on your right side when you enter the Arena down the hallway past the ATM machine and drink vending machine. There is a wide variety of equipment and sportswear but you also can get your skates sharpened there. Also, if you don't find what you are looking for in the pro shop, there are Pure Hockey retail stores in Kingston at 167 Summer Street and in Braintree at 220 Wood Rd where you also can find a HUGE selection of goalie gear. It's like being a kid in a candy shop.

As well, for other retail shops, there are two malls nearby, the indoor South Shore Plaza in Braintree and the Derby Street shops in Hingham. Between the two, there are hundreds of national and regional retail stores and great restaurants to discover.

## Hey, what about the tournament Banquet????

This year, we will have the tournament banquet for all teams under one roof at the same time! Dave & Buster's, 5-8pm on Thursday April 24. We are closing D&B for three hours for our private tournament banquet! Tickets available at the check-in desk at the rink on Thursday and at the door at D&Bs Thursday from 5-8pm. \$40 per person includes a delicious buffet plus \$10 Power Card plus unlimited video game play. Credit and debits cards will be readily accepted as well as checks and cash.

## Does the chef accept requests for special diets?

If you have a participant who needs a gluten-free or dairy-free or vegetarian diet or is just plain picky, ask the staff at the Dave & Buster's to prepare your participant's plate individually to suit their dietary and other needs. We welcome the opportunity to exceed expectations!

## My player/parent/coach needs a time-out. Where can they go to chill?

We will have a quiet room just inside the entrance to the Arena on the left side in the Training Room. We will have some stress-balls and other stress-relieving items in the room. If that doesn't work for the adults, we have a very attractive circular full bar on the second floor overlooking Rink 2.

## Do you have any place for us to temporarily store our hockey bags?

Yes, and the key word is "temporarily." You can place them against the wall just inside the Training Room door. No overnight storage, please.

## My female players and coaches would like to pad up in a female-only locker room. Is that possible?

Not just possible, absolutely we have a female-only locker room, compliments of the Lovell Academy girls program who will let us use their cool locker room inside the rink, to the right and down the hall.

## Will we have a game program when we arrive at the rink?

No. But even better, you will have a virtual game program available to you by Tuesday at [www.shiboston2025.org](http://www.shiboston2025.org) in PDF format to view, print or both. This will be a live document and we will update and make modifications daily if you/we left somebody off the roster or misspelled a name or any other gaffes.

## Do you plan on any special features at this year's POLAR SELTZER SHI Boston 2025 tournament?

You bet!!! On Rink 2 from 3pm to 4pm we will have our annual Pat Flick Memorial Coaches Classic. Then on Friday from noon to 2pm, the Boston Bruins mascot Blades will make a guest appearance as well as the Boston Bruins Alumni who will do a clinic from noon to 1:30pm on Rink 3. And on Saturday, from 3-4pm, we will have our invitational "A" level game for all "A" level players on Rink 2.

Between 11am – 12:30pm, Rink 3, Hall of Famer and 3xStanley Cup champion Joe Mullen presents "Hard Work Pays Off" sponsored by Riverview School; Boston Bruins Foundation President Bob Sweeney presents "Hockey Is Fun" sponsored by the Boston Bruins Foundation; and 1980 Olympic gold medalist Dave Silk presents "Believe in Miracles" sponsored by Polar Seltzer. All participants must have helmets, neck-guards and skates in order to be on the ice.

## Didn't answer one of your questions?

We knew it! Just email [info@shiboston2024.org](mailto:info@shiboston2024.org) or pick up that phone and call Tournament Director Steve Nearman at 703-587-4321.



# SHI Boston 2025 Tournament Rules



## QUICK REVIEW OF THE SHI TOURNAMENT RULES TO ENSURE THAT EVERYBODY HAS THE ABSOLUTE BEST EXPERIENCE ON AND OFF THE ICE AT LOVELL ARENA

- PLEASE do not run up the score on the other team. If it is a lop-sided game, the dominant team would do well to help its opponent's players be successful as well. Then everybody leaves the ice feeling good;
- Helmets with face protection and neck guards are mandatory for all players on ice and bench;
- Helmets mandatory for coaches and officials on the ice;
- Coaches, please leave your sticks off ice and let the players play;
- No checking allowed;
- No slap shots allowed;
- Penalties shots will be issued for intentional tripping and holding;
- 2-minute penalties will be issued for players exhibiting aggressive behavior;
- 5-minute penalties for rough play or slashing;
- Fighting will result in immediate expulsion from the game and possible expulsion from the tournament;
- Blue line off sides will be waived and not called;
- Icing the puck will be waived and not called;
- Referee blows whistle at his/her discretion;
- Every effort must be made to ensure that each player has equal ice time. No double shifting unless due to lack of personnel;
- Each team may have five skaters plus one goaltender on the ice during play. In addition, a maximum of three extra players may be on the ice during play with both coaches in agreement;
- Clubs with more than one team may not substitute players back and forth, with the only exception being if the goalie is hurt or sick;
- If a player is in the opposite end, and the puck is passed to him/her resulting in a goal being scored, it shall only be allowed if the player's ability does not allow him/her to clear the opposition's end zone;
- In accordance with the true spirit of the inclusive hockey, each coach should attempt to match lines with similarly skilled players from the other team. While this may be difficult to achieve, every effort should be made to comply with this requirement;
- Play time will consist of three, 15-minute periods of running time with two-minute buzzer system and stop time between changing of lines. There will be a two-minute warmup time before the start of each game. Referee will blow whistle for start of game;
- Tournament teams consists of A, B and C teams, A being more advanced players.

